


### Innerdiameter Metal Conduit (IMC)

American National Standard for IMC (ANSI C80.3)

**Finish: Pre-galvanized**

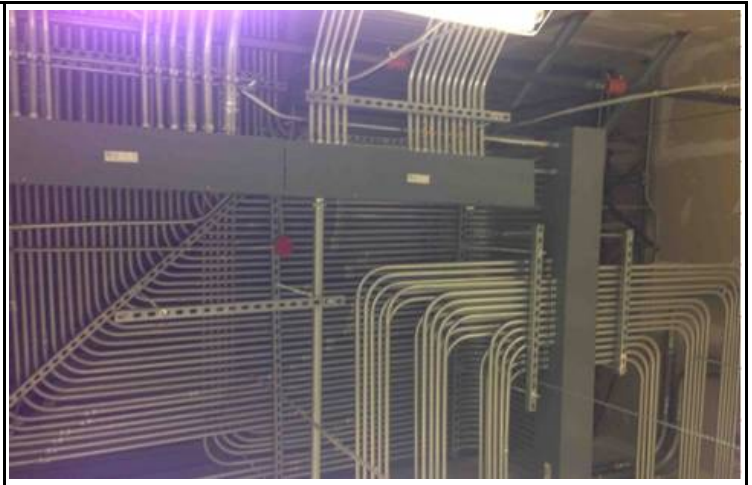
Note: Other length for choice: 3.05meters

 <b>MSM CODE</b>	<b>CAT #</b>	Trade Size	Nominal Outside Dia.		Nominal Wall Thickness		Net Thickness	Length
		in.	in.	mm	in.	mm	mm	m
IMC-050	IMC-201	1/2"	0.815	20.70	0.070	1.79	1.70	3.00
IMC-075	IMC-202	3/4"	1.029	26.10	0.075	1.90	1.70	3.00
IMC-100	IMC-203	1"	1.290	32.77	0.085	2.15	2.00	3.00
IMC-125	IMC-204	1-1/4"	1.638	41.59	0.085	2.16	2.00	3.00
IMC-150	IMC-205	1-1/2"	1.883	47.82	0.090	2.29	2.20	3.00
IMC-200	IMC-206	2"	2.360	59.93	0.095	2.41	2.20	3.00

Applicable tolerances:

Length: ± 0.25"

Outside Diameter: 1/2" -2" ±0.005"



★ Consult Manufacturer for Proper Installation

#### Feature & Application:

1. Compare with Rigid Conduit, the features as below:

- Light-weight ductile steel conduit for long life indoor and easy bending.
- Weight 1/3 less than Rigid Conduit.

2. Installation Environment: Indoor, dry location .