



# CO.SIME.

EQUIPMENT FOR ATEX





<b>GAS</b>	<b>II2G Ex d IIC T2 ÷ T5</b>	<b>Gb</b>	<b>IP66</b>	<b>Zone 1 - Zone 21 - Zone 2 - Zone 22</b>
<b>DUST</b>	<b>II2D Ex tb IIIC T95°C ÷ T295°C</b>	<b>Db</b>	<b>IP66</b>	<b>❄ -20°C ÷ ☀ +40°C    ❄ -20°C ÷ ☀ +80°C</b>

<b>Materiale :</b>	corpo : lega leggera Accessori: Acciaio zincato (a richiesta in acciaio inox)
<b>Viteria :</b>	Acciaio inox AISI 304
<b>Guarnizioni :</b>	+40°C EPDM , +60°C Silicone
<b>Peso :</b>	1,5 ÷ 6,5 kg
<b>Material :</b>	body : light alloy accessories: galvanized steel hardware (stainless steel upon request)
<b>Hardware :</b>	Stainless steel AISI 304
<b>Gaskets :</b>	+40°C EPDM , +60°C Silicon
<b>Weight :</b>	1,5 ÷ 6,5 kg

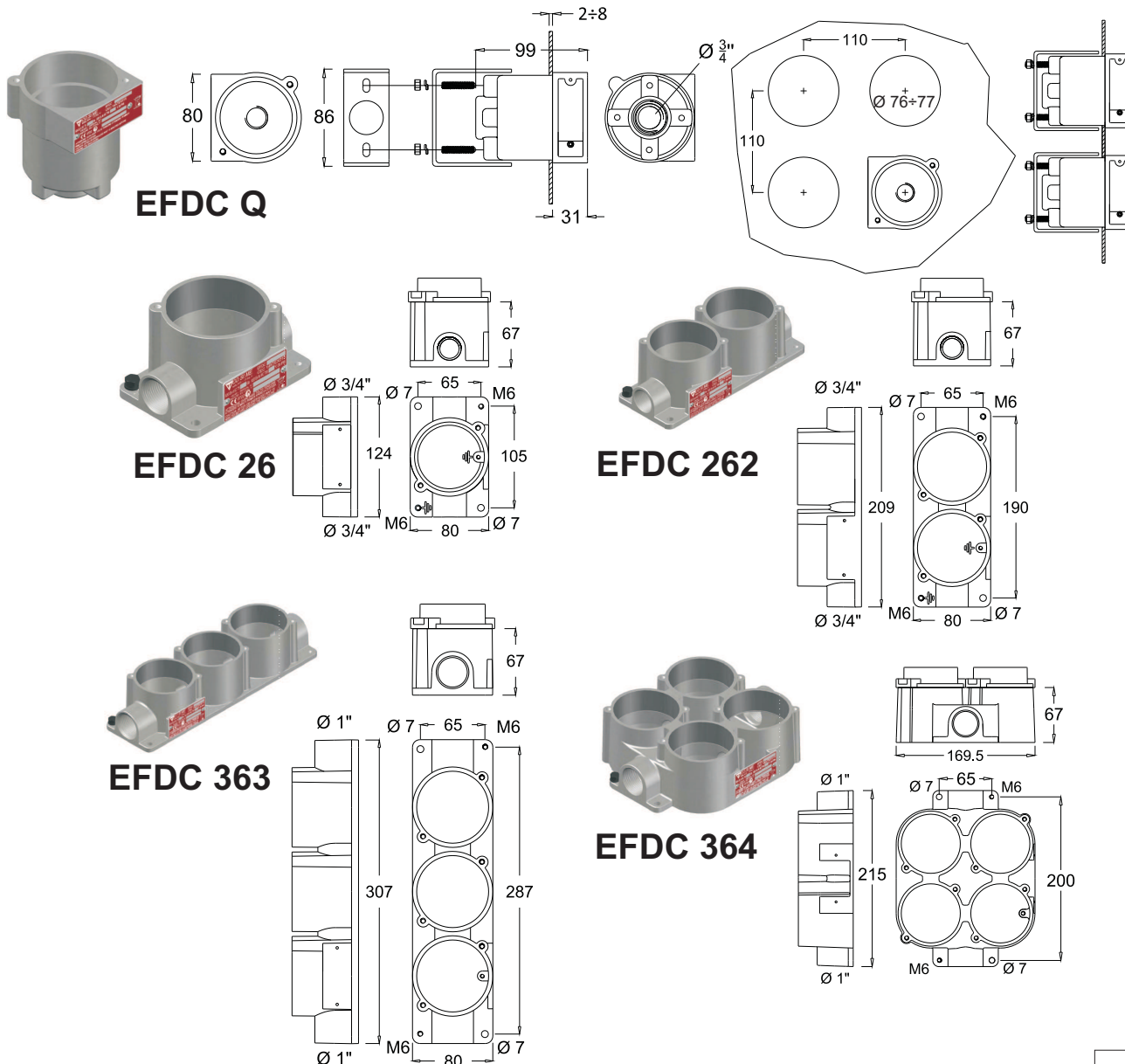


**CARATTERISTICHE:**

Custodie EFDC, per installazione di combinazioni di pulsanti, selettori e segnalazione (colonnine comando motori, ecc.)

**FEATURES:**

EFDC enclosures, for installation of multiple push buttons, selectors and signaling lamps, with small size and fit command and signaling units (motor control stations, etc.)





**GAS** II2G Ex d IIC T4 ÷ T5 **Gb**

**IP66**

**Zone 1 - Zone 21 - Zone 2 - Zone 22**

**DUST** II2D Ex tb IIIC T95°C ÷ T130°C **Db**

**IP66**

❄️ -20°C ÷ ☀️ +40°C

❄️ -20°C ÷ ☀️ +80°C

**Materiale :** corpo : lega leggera  
**Viteria :** Acciaio inox AISI 304  
**Guarnizioni :** +40°C EPDM , +60°C Silicone  
**Elementi di contatto :** Autopulenti dorati  
Morsetti: a vite con serrafilo 2x2,5mm<sup>2</sup>  
Corrente nominale: 10 A

**Material :** body : light alloy  
**Screw :** Stainless steel AISI 304  
**Gaskets :** +40°C EPDM , +60°C Silicon  
**Electrical contacts :** Self cleaning golden contacts  
Rated current 10A  
Terminals: On screw with plate clamp 2x2,25 mm<sup>2</sup>

Codice Code	Resistenza Resistance	Descrizione Description
EFD P	Da precisare	Potenzimetro Potentiometer

Codice Code	Contatti Contacts	Descrizione Description
EFD 0 EFD 0S	1 NC 1 NO+1 NC	Pulsante di arresto Stop push button  Targa rossa Red label
EFD 1 EFD 1S	1 NO 1 NO+1 NC	Pulsante di marcia Start push button  Targa verde Green label
		Pulsante Nero Black button

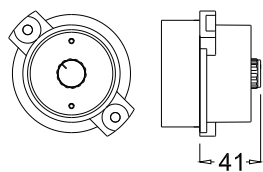
Codice Code	Contatti Contacts	Descrizione Description
EFD 0FB EFD 0SFB	1 NC 1 NO+1 NC	Pulsante di emergenza con aggancio Sblocco a rotazione Stay put emergency push button twist to release
EFD 0SF/BY EFD 1S	1 NO 1 NO+1 NC	Pulsante di emergenza con aggancio Sgancio a chiave Stay put emergency push button key released
		Fungo rosso Ø 39 Red mushroom Ø 39  Targa Gialla Yellow label
EFD 9YF EFD 9YFS	2 NO 1 NC+ 1 NO	Pulsante nero con blocco in entrambe le posizioni Both position black key locked push button

Codice Code	Contatti Contacts	Descrizione Description
EFD 0F EFD 0SF	1 NC 1 NO+1 NC	Pulsante di emergenza Emergency push button  Fungo rosso Ø35 mm Red mushroom Ø 35 mm  Targa gialla Yellow label

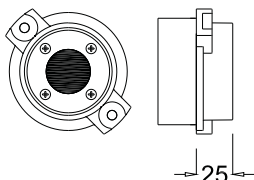
Il "Codice" non comprende la scatola EFDC  
The "Code" doesn't include EFDC enclosure



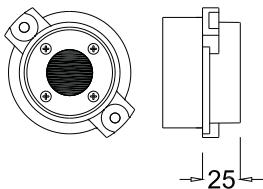
EFD P



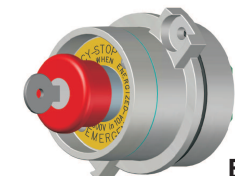
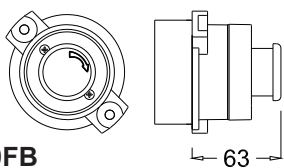
EFD 0



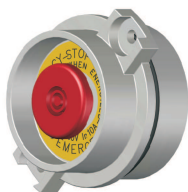
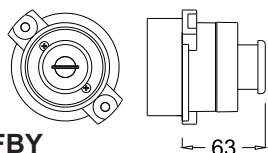
EFD 1



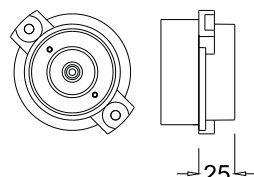
EFD 0FB



EFD 0FBY



EFD 0F



Esempio composizione (EFDC 363) con montati:

Pulsante di marcia (EFD1) + Pulsante di arresto (EFD 0) + Pulsante di emergenza (EFD 0FBY) = EFDC (1) (0) (0FBY)

Code composition example:

Enclosure with assembled three elements (EFDC 363)

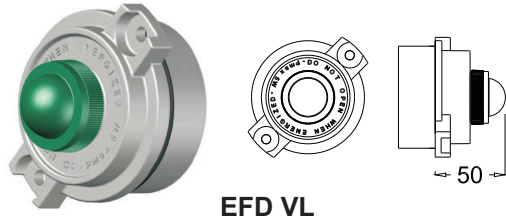
Start button (EFD1) + Stop button (EFD 0) + Emergency button (EFD 0FBY) = EFDC (1) (0) (0FBY)



GAS	II2G Ex d IIC T2 ÷ T5	Gb	IP66	Zone 1 - Zone 21 - Zone 2 - Zone 22
DUST	II2D Ex tb IIIC T95°C ÷ T295°C	Db	IP66	❄️ -20°C ÷ ☀️ +40°C    ❄️ -20°C ÷ ☀️ +80°C

**SEGNALATORE LUMINOSO PER SCATOLE EFDC**  
PILOT LIGHTS FOR EFDC BOXES

**EFD**



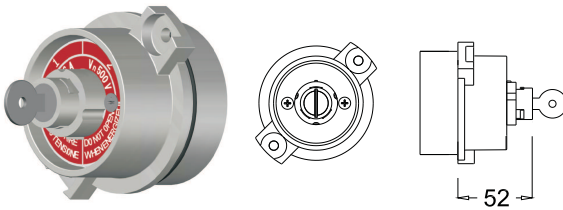
EFD VL

Codice Code	Tensione Voltage	Colore Colour	Attacco
EFD VL	12+230V max 5W	Verde/Green	Ba9S
EFD RL	12+230V max 5W	Rosso/Red	Ba9S
EFD BL	12+230V max 5W	Bianco/White	Ba9S
EFD GL	12+230V max 5W	Giallo/Yellow	Ba9S
EFD AL	12+230V max 5W	Azzurro/Blue	Ba9S

Il "Codice" non comprende la scatola EFDC e la lampada

**INTERRUTTORE A CHIAVE PER SCATOLE EFDC**  
PILOT LIGHTS FOR EFDC BOXES

**EFD 9Y**

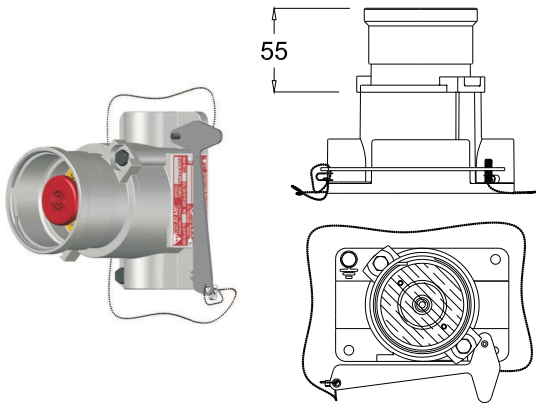


Codice Code	Corrente nom. Rated Current	Descrizione Description
EFD 9Y	16A - 500Vac	Interruttore bipolare ON-OFF ON-OFF Bipolar switch Targa rossa Red label Estrazione chiave in pos. OFF a richiesta in pos. OFF e ON Key release in OFF pos. upon request in OFF and ON pos.

Il "Codice" non comprende la scatola EFDC  
The "Code" doesn't include EFDC enclosure

**PULSANTE DI EMERGENZA CON VETRO DI PROTEZIONE**  
EMERGENCY PUSH BUTTON WITH GLASS PROTECTION

**EFDC(0...)**

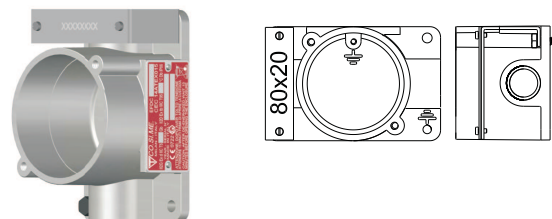
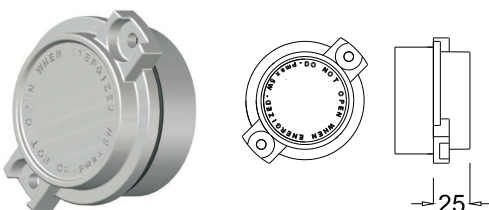


Dimensioni scatole EFDC : Vedi sez I1  
Dimensions EFDC boxes: See sect I1

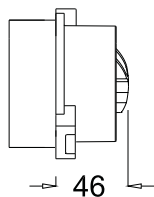
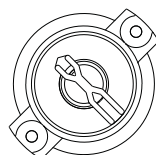
Codice Code	Contatti Contacts	Descrizione Description
EFDC (0E)	1 NC	Rompi il Vetro e premi (ritorno a molla) Break the glass and push (automatic spring return)
EFDC (0SE)	1 NO+1 NC	Rompi il vetro (ritorno a molla) Break the glass (automatic spring return)
EFDC (1E)	1 NO	Rompi il vetro e premi con aggancio sblocco a rot. Break the glass and push pull to release
EFDC (0BE)	1 NC	Fungo rosso Ø 35 mm Red mushroom Ø 35 mm
EFDC (0SBE)	1NO+1 NC	Targa gialla Yellow label Martello in acciaio inox-catena in ottone nichelato (Peso: 42 gr) Stainless steel hammer - nickel-plated brass chain (weight: 42 gr)

**TAPPO PER SCATOLE EFDC** **GUF 06**  
PLUG FOR EFDC BOXES

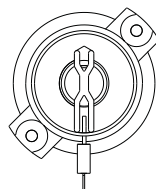
**SUPPORTI PER SCATOLE EFDC** **EFD 01/9**  
SUPPORTS FOR EFDC BOXES



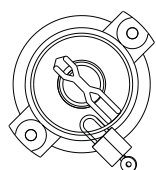
<b>Ex</b>	<b>GAS</b>	<b>II2G Ex d IIC T4 ÷ T5</b>	<b>Gb</b>	<b>IP66</b>	<b>Zone 1 - Zone 21 - Zone 2 - Zone 22</b>	
	<b>DUST</b>	<b>II2D Ex tb IIIC T95°C ÷ T130°C</b>	<b>Db</b>	<b>IP66</b>	<b>❄️-20°C ÷ ☀️+40°C</b>	<b>❄️-20°C ÷ ☀️+80°C</b>



Elemento a tre posizioni  
lucchettabile  
Aggiungere al codice il  
suffisso L



Three position padlocking  
element  
Add to code the suffix L



Elemento a due posizioni  
lucchettabile  
Aggiungere al codice il  
suffisso L

two position padlocking  
element  
Add to code the suffix L

**Simboli schema elettrico e funzionale**  
*Electrical and arrangement symbols*

- Ritorno a molla  
*Spring return*
- Comando rotativo  
*Rotary command*
- Contatto aperto  
*Opened contact*
- Contatto chiuso  
*Closed contact*
- Contatto senza interruzione  
*Contact without interruption*

Codice Code	Diagram	1	2																	
<b>EFD 5</b> (Fig. 1)		11-12	×	○																
<b>EFD 52</b> (Fig. 1)		11-12	×	○																
<b>EFD 53</b> (Fig. 1)		11-12	×	○																
<b>EFD 50</b> (Fig. 2)		11-12	×	○	○															
<b>EFD 50+</b> (Fig. 2)		11-12	×	○	○															
<b>EFD 502</b> (Fig. 2)		11-12	×	○	○															
<b>EFD 502+</b> (Fig. 2)		11-12	×	○	○															
<b>EFD 503</b> (Fig. 2)		11-12	×	○	○															
<b>EFD 6</b> (Fig. 3)		13-14	○	×																
<b>EFD 63</b> (Fig. 3)		13-14	○	×																
<b>EFD 64</b> (Fig. 3)		13-14	○	×																
<b>EFD 7</b> (Fig. 4)		13-14	○	×																
<b>EFD 8</b> (Fig. 4)		13-14	○	×																
<b>EFD Y</b> (Fig. 5)		13-14	×	×	○	○	○	○												

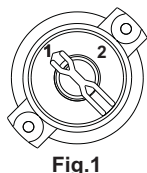


Fig.1

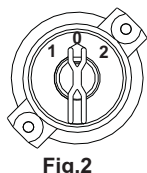


Fig.2

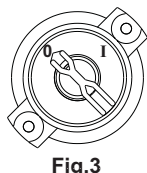


Fig.3

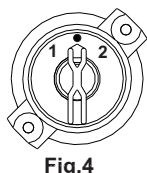


Fig.4

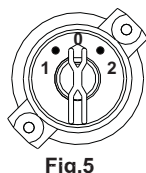


Fig.5