

## EX-PROOF JUNCTION BOXES



Classification:	<b>Group II</b>	<b>Category 2G 2D</b>	Directive:	<b>2014/34/EU</b>
Installation:	<b>Zone 1 / 2 (Gas)</b>	<b>Zone 21 / 22 (Dust)</b>	Certification:	<b>IEP 23 ATEX 1324X</b>
Standards:	<b>EN 60079-0; EN 60079-1; EN 60079-7; EN 60079-31</b>		Degree Of Protection:	<b>IP66</b>
Marking:	<b>II 2G Ex db IIC T4 ~ T6 Gb</b>		<b>II 2D Ex tb IIIC T85°C ~ T120°C Db, IP66</b>	

### ELECTRICAL FEATURES

Rated voltage: 750 V  
 Rated frequency: 50 / 60 Hz  
 Rated current: 8 - 175 (A)  
 Max. current density: 2.5 - 6.6 (A/mm<sup>2</sup>)  
 Terminal cross-sectional area: 1.5; 2.5; 4; 6; 10; 16; 25; 35; 70 (mm<sup>2</sup>)

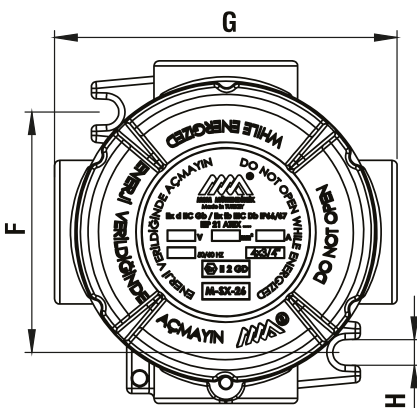


### MECHANICAL FEATURES

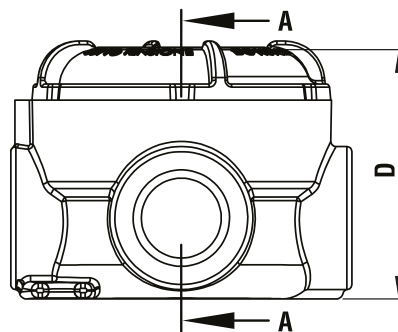
Body: Copper-Free Aluminum  
 Screw: Stainless steel  
 Gasket: O-ring, Neoprene  
 Entry: NPT Thread ANSI B1.20.1  
 Optional: GAS UNI ISO 228-1  
 UNI ISO 7/1  
 METRIC ISO 261/965

### Technical Features

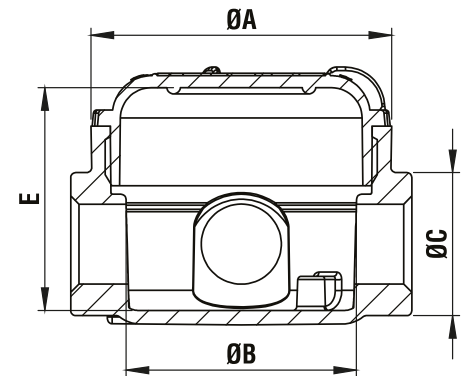
TYPE	ØA (mm)	ØB (mm)	ØC (mm)	D (mm)	E (mm)	F (mm)	G (mm)	H (mm)	Weight (kg)
M-S.-26	140	104	70	111	100	118	170	10	
M-S.-36	140	104	70	111	100	118	170	10	
M-S.-46	140	104	70	111	100	118	170	10	
M-S.-56	140	104	70	111	100	118	170	10	
M-S.-66	140	104	70	111	100	118	170	10	



TOP WIEW



SIDE WIEW

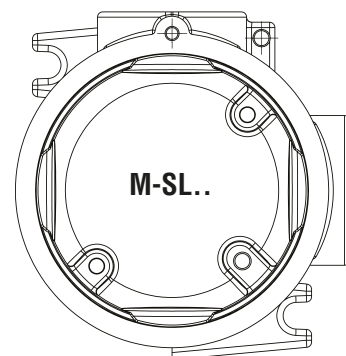


SECTION A-A

## EX-PROOF JUNCTION BOXES

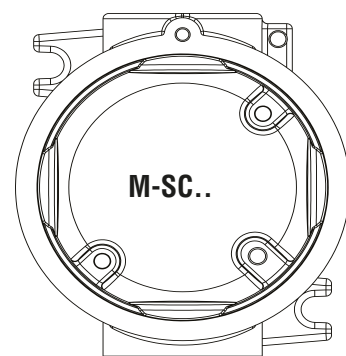
## M-SL.. SERIES (2 WAY)

NPT Code	NPT Size	Gas Code	Gas Size	Metrik Code	Metrik Size
M-SL-26N	3/4"	M-SL-26G	3/4"	M-SL-26M	M25x1,5
M-SL-36N	1"	M-SL-36G	1"	M-SL-36M	M32x1,5
M-SL-46N	1 1/4"	M-SL-46G	1 1/4"	M-SL-46M	M40x1,5
M-SL-56N	1 1/2"	M-SL-56G	1 1/2"	M-SL-56M	M50x1,5
M-SL-66N	2"	M-SL-66G	2"	M-SL-66M	M63x1,5



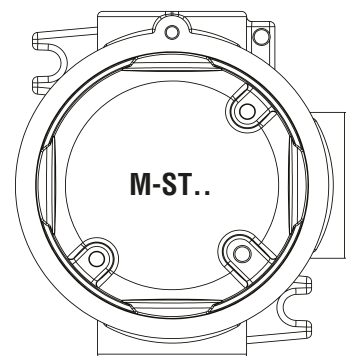
## M-SC.. SERIES (2 WAY)

NPT Code	NPT Size	Gas Code	Gas Size	Metrik Code	Metrik Size
M-SC-26N	3/4"	M-SC-26G	3/4"	M-SC-26M	M25x1,5
M-SC-36N	1"	M-SC-36G	1"	M-SC-36M	M32x1,5
M-SC-46N	1 1/4"	M-SC-46G	1 1/4"	M-SC-46M	M40x1,5
M-SC-56N	1 1/2"	M-SC-56G	1 1/2"	M-SC-56M	M50x1,5
M-SC-66N	2"	M-SC-66G	2"	M-SC-66M	M63x1,5



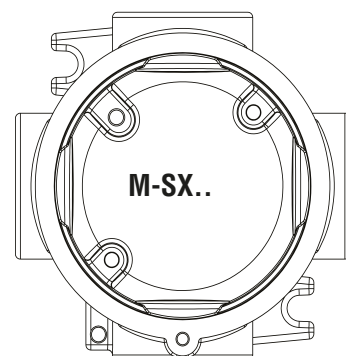
## M-ST.. SERIES (3 WAY)

NPT Code	NPT Size	Gas Code	Gas Size	Metrik Code	Metrik Size
M-ST-26N	3/4"	M-ST-26G	3/4"	M-ST-26M	M25x1,5
M-ST-36N	1"	M-ST-36G	1"	M-ST-36M	M32x1,5
M-ST-46N	1 1/4"	M-ST-46G	1 1/4"	M-ST-46M	M40x1,5
M-ST-56N	1 1/2"	M-ST-56G	1 1/2"	M-ST-56M	M50x1,5
M-ST-66N	2"	M-ST-66G	2"	M-ST-66M	M63x1,5



## M-SX.. SERIES (4 WAY)

NPT Code	NPT Size	Gas Code	Gas Size	Metrik Code	Metrik Size
M-SX-26N	3/4"	M-SX-26G	3/4"	M-SX-26M	M32x1,5
M-SX-36N	1"	M-SX-36G	1"	M-SX-36M	M32x1,5
M-SX-46N	1 1/4"	M-SX-46G	1 1/4"	M-SX-46M	M40x1,5
M-SX-56N	1 1/2"	M-SX-56G	1 1/2"	M-SX-56M	M50x1,5
M-SX-66N	2"	M-SX-66G	2"	M-SX-66M	M63x1,5



Notes: According to request, different productions can be made on the same junction box in thread sizes of 1", 1 1/4", 1 1/2" and 1". For detailed information and ATEX documents of all our Exproof products visit our website "www.exproof.info"

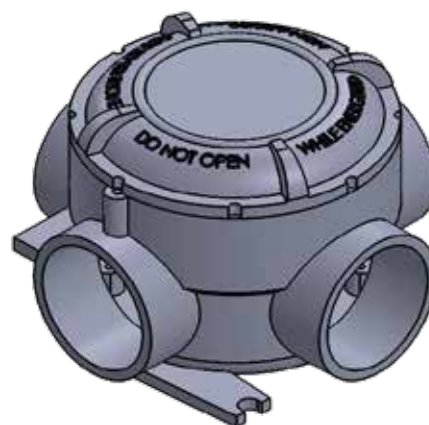
## EX-PROOF JUNCTION BOXES

Ex d IIC rated terminal strips			
Ambient temperature	Temperature of terminal operation	Temperature class	Maximum surface temperature
-20°C +40°C -40°C +40°C	≥80°C	T6	T85°C
-20°C +65°C -40°C +65°C	≥100°C	T5	T100°C
-20°C +150°C -40°C +150°C	≥180°C	T3	T200°C

Ex e II or Ex i IIC rated terminal strips (ATEX-certified terminals)			
Ambient temperature	Temperature of terminal operation	Temperature class	Maximum surface temperature
-20°C +40°C -40°C +40°C	≥80°C	T6	T85°C
-20°C +65°C -40°C +65°C	≥100°C	T5	T100°C
-20°C +80°C -40°C +80°C	≥130°C	T4	T135°C

CROSS-SECTIONAL AREA AND MAXIMUM NUMBER OF TERMINALS										
Terminal Size	1.5	2.5	4	6	10	16	25	35	70	
M-36 / 46 / 56 / 66	16	16	16	9	7	6	4	4	3	
Maximum current (A)	at 40°C									
	at 65°C									
	at 150°C									
Maximum current density (A/mm <sup>2</sup> ) for terminals and cables	6.6	5	5	4	3	3	3	3	2.5	
Maximum current (A) referring to 35% of the max. number of terminals as given in the table	at 40°C									
	at 65°C									
	at 150°C									
Maximum current density (A/mm <sup>2</sup> ) for terminals and cables referring to 35% of the max. number of terminals as given in the table	8.5	7	6	5	5	4	4	4	3	
Min.-max. rated voltage (V)	420 - 750									

MOUNTING RAILS (as per standard IEC 60715)	
Weidmüller Terminal code	Junction box Type (M-36 / 46 / 56 / 66) Profile Type
WDU	Top hat PR/3/AC
SAK	DIN PR/DIN/AC
BK	Bracket
AKZ	Top hat PR/2/AC



Top hat profile PR/3/AC

Top hat profile PR/2/AC

DIN profile PR/DIN/AC

